

# **Hervey's Range Shooting Complex**

## **Range Standing Orders**



Approved by:

**R. HAWKINS**

Captain

Townsville Marksmen Rifle Club

# DOCUMENT CONTENTS

	Page	
PREAMBLE		3
INTRODUCTION	3	
EXECUTIVE AUTHORITY	3	
LOCATION	3	
RANGES	4	
 PART 1 – ALL USER REQUIREMENTS		 5
1.1 RANGE ACCESS	5	
1.2 DISCHARGE OF WEAPONS AT THE HRSC	6	
1.3 CASUAL RANGE BOOKINGS	10	
1.4 HEALTH AND SAFETY REQUIREMENTS	11	
1.5 ENVIRONMENTAL PROTECTION AND RANGE PROTECTION	13	
 PART 2 – TMRC 900M RANGE (RANGE 1) SPECIFIC REQUIREMENTS		 15
2.1 DESCRIPTION OF RANGE	15	
2.2 CONTROL OF TMRC 900M RANGE	15	
2.3 DETAILED INSTRUCTIONS FOR SPECIFIC FIRING POINTS	19	
2.4 MEDICAL / EVACUATION	20	
2.5 RANGE RESTRICTIONS	20	
 PART 3 – RIMFIRE RIFLE RANGE (RANGE 3) SPECIFIC REQUIREMENTS		 21
3.1 DESCRIPTION OF RANGE	21	
3.2 CONTROL OF 50M RIMFIRE RIFLE RANGE	21	
3.3 HEALTH AND SAFETY	23	
3.4 RANGE COMMUNICATIONS	23	
 Part 4 – 200M RANGE (RANGE 2) SPECIFIC REQUIREMENTS		 24
4.1 DESCRIPTION OF RANGE	22	
4.2 CONTROL OF 200M RANGE	24	
4.3 HEALTH AND SAFETY	27	
4.4 RANGE COMMUNICATIONS	27	
 ENCLOSURES		 28
 ATTACHMENTS		 28

# Hervey's Range Shooting Complex

## Range Standing Orders

### INTRODUCTION

Hervey's Range Shooting Complex (HRSC) is a multi-discipline range to the North West of Townsville. The complex, owned by the Townsville Marksmen Rifle Club Inc (TMRC), is located approximately 30km from Townsville City on Hervey Range Road and is shared with the North Queensland Rifle Association (NQRA). The complex consists of a 900m Range, a 200m Range and a 50m Rimfire Rifle Range.

These Range Standing Orders (RSO) are divided into four parts, those being:

- **Part 1 – All User Requirements.** This section of the RSO describe the common responsibilities for all range users. TMRC, as the owner of the HRSC, has the legal right and legal responsibility to ensure the safety and correct behaviour of all personnel on the range. Consequently, all range users are to be aware of these requirements.
- **Part 2 – 900m Range (Range 1) Specific Requirements.** This section details the specific responsibilities for use of the 900m Full Bore Range.
- **Part 3 – Rimfire Rifle Range (Range 3) Specific Requirements.** This section details the specific responsibilities for use of the Rimfire Rifle Range.
- **Part 4 – Range 2 - 200m Range (Range 2) Specific Requirements.** This section details the specific responsibilities for use of the 200m Range.

### EXECUTIVE AUTHORITY

The TMRC Committee, as the Executive Authority of the HRSC, expect all users of the range to have read these RSO and to fully comply with the rules and guidance provided within this document. The TMRC Committee reserves the right as necessary, to enforce these rules or where appropriate ban personnel from HRSC where they have been found to breach these RSO.

The TMRC Committee is responsible for ensuring that these RSO are reviewed and updated on each occasion there has been an amendment to the Range Approval Certificate for any approved range on the complex.

### LOCATION

The complex is located at the base of Hervey Range with access off Hervey Range Road. The address is 8 Rifle Range Road, Hervey Range, QLD 4817.

As at December 2015, the entire complex (ranges and danger areas) are freehold property (171.8 hectares) described as Lot 10 on SP277791, Parish of Hervey, County of Elphinstone (see Enclosure 1).

## **RANGES**

An aerial picture detailing the ranges at the HRSC is at Enclosure 2.

# **PART 1 – ALL USER REQUIREMENTS**

## **1.1 RANGE ACCESS**

### **1.1.1 Access**

Access is to be controlled to the range. Only appointed officials are to have access to keys to the range complex and these keys are not to be copied or loaned unless written approval is obtained from the TMRC Committee. No other locks are to be fitted without the express approval of the TMRC Committee.

### **1.1.2 Timings**

Live firing with centrefire rifles may only occur during the hours of 8.00am and 5.00pm daily. In the event of a national, state, district or designated local championships, range operating hours may be extended with the prior approval of the TMRC Committee. Live firing with rimfire rifles may occur during the hours of 8.00am and 9.30pm daily.

### **1.1.3 HRSC Allocated Usage Days**

The TMRC Committee has nominated specific days for use by the Club. Specific days allocated for use are:

- a. Fullbore – Sunday on Range 1;
- b. Smallbore – 2<sup>nd</sup> and 4<sup>th</sup> Saturdays of each month (generally) on Range 2;
- c. Global Benchrest Association (formally International Bench Rest) – 1<sup>st</sup> Saturday of each month (generally) on Range 1;
- d. Full Boar Archers – two Sundays per month (generally), using the 50m Rimfire Rifle Range (Range 3) and area to the West; and
- e. Gel Blasters – two Saturdays per month (generally), using the area around the NQRA shipping container to the East of the 500m firing point on the 900m Range (Range 1).

### **1.1.4 Weekday Bookings**

Casual weekday use by club members can be booked through the Club Secretary.

Third Party range bookings on weekdays take priority over TMRC nominated practice days and Casual Range bookings.

### **1.1.5 Range Closure Periods**

Range closure periods will be notified on the TMRC website at [www.tmrc.com.au](http://www.tmrc.com.au). The range is normally closed the week prior to and during the Christmas / New Year holiday period.

The TMRC Committee may decide to close the range during periods of extreme and inclement weather, where use of vehicles on the range and shooting may cause excessive damage.

### **1.1.6 Range Register – Attendance for the Purpose of Live Firing**

All personnel are to sign the Range Register and report to the Range Officer before moving onto the firing point on any of the live fire ranges.

### **1.1.7 Week Day Use of the HRSC**

Personnel who use the range during the week are to ensure that they comply with the following directions:

- a. All personnel must complete the Range Register located at either the 200m Range (Range 2) in the metal box or the 900m Range trailer.
- b. A certified Range Officer must be nominated in the Range Register for each range to be used and the Range Officers must complete the details in the Range Register for the range under their control.
- c. All Range Officers or duly appointed club members with access are responsible for ensuring that all personnel have left the range, the red flag at the front entrance is lowered and the gate is locked on departing the HRSC. Where other practices or approved activities are occurring and personnel are present on the range, all Range Officers are responsible for conducting a handover with the remaining Range Officer or person in charge. This handover is to include who is remaining on the range and the need for the gate to be secured upon exiting the HRSC.
- d. The committee is to notify the caretaker of any agreed week day range use.

### **1.1.8 Unlicensed Shooters**

Unlicensed shooters must complete a Form 33 on their first visit and sign in on the Form 33A on subsequent visits and present the Range Officer with photographic proof of identification. Unlicensed shooters must be supervised by a Range Officer, Assistant Range Officer or a designated licensed shooter.

### **1.1.9 Restricted Areas**

The Caretaker's residence adjacent to the TMRC clubhouse is out-of-bounds to all personnel except in the case of an emergency.

## **1.2 DISCHARGE OF WEAPONS AT THE HRSC**

### **1.2.1 Supervision of Safety - Responsible Person**

The responsibility for supervision of safety remains with the certified Range Officer (NRAA or QTS certified) or the specifically nominated person of a third party user which has sole use of the range. The TMRC Committee will formally appoint and record 'approved' TMRC Range Officers at the first committee meeting held each calendar year.

### **1.2.2 Range Officer**

All firearm discharges on all ranges on the HRSC complex must be controlled by a duly appointed and certified Range Officer. The Range Officer is responsible for the safe conduct of all shooting under their control and the actions of personnel whilst on the range. Firearms must not be discharged until the Range Officer so authorises. The Range Officer is to ensure that shooting is conducted in a safe manner and in accordance with the rules listed in these Range Standing Orders, the current NRAA SSRs and the Queensland Weapons Act and Regulations.

The Range Officer's and any Assistant Range Officer's names are to be displayed on the notice boards at each range when the range is open for shooting.

### **1.2.3 Danger Flags**

Red range danger flags (no smaller than 1.2m X 0.9m) are to be positioned at all times when firearms are being discharged on the complex at the following locations:

- a. On the flag pole at the range entrance.
- b. Immediately to the flank of the main firing line at all range firing points in use (including the 900m range firing mound).
- c. On the gate between the 200m Range (Range 2) and 900m Range (Range 1) when shooting occurs from 600m on the 900m Range (Range 1).
- d. On the gate between the 200m Range (Range 2) and 50m Range (Range 3) when shooting occurs from 700m to 900m on the 900m Range (Range 1).

Red flags are to be lowered or removed when shooting has been completed and the range is not being used to discharge weapons.

### **1.2.4 Procedure Before Firing Commences**

The Range Officer is to ensure the following actions have occurred prior to commencing firing:

- a. Danger flags are in place (refer 1.2.3).
- b. Any required road closures or movement barriers are in place.
- c. A first aid kit is within close proximity.
- d. All ranges in the danger area forward of the firing point are not occupied and that the observable danger area is clear of personnel and livestock before firing is authorised.
- e. All shooters have signed the range register.
- f. Unlicensed visitors proposing to shoot have completed the appropriate Queensland Police Service (QPS) paperwork and appropriate supervision arrangements have been implemented (refer 1.1.8).
- g. Shooters are not under the influence of drugs or alcohol.

### **1.2.5 Conclusion of Shooting**

The Range Officer is to ensure the following actions have occurred at the conclusion of shooting:

- a. Firearms are cleared and empty chamber indicators inserted before removal from the firing point in accordance with the designated rules under which the shoot is being conducted.
- b. All targets and rubbish have been collected and put away or disposed of.
- c. All equipment used is returned to its designated storage area.
- d. Danger flags are removed or lowered.

### **1.2.6 Type of Firearms Approved for Use on the Range**

Only firearms approved for use in the designated matches listed on the Range Approval Permit for the range in use can be used. The use of Category H firearms and shotguns on the complex is only permitted by Registered Training Authorities (such as Asset Training Australia).

Rifles in .338 Lapua calibre can be used but must adhere to the designated muzzle velocity and muzzle energy as stipulated in the Range Approval Permit. The use of .338 Lapua calibre rifles is restricted to paper targets only.

### **1.2.7 Non Standard Targets**

Glass targets are banned from all ranges and any non-standard targets must be approved by the TMRC Committee prior to use.

### **1.2.8 Specific Range Restrictions**

In addition to standard safety procedures, the following restrictions apply to the HRSC:

- a. Automatic fire is not permitted.
- b. Pyrotechnics and tracer ammunition are not to be used.
- c. Use of steel plate targets is not permitted with centre fire rifles.
- d. Metal silhouette targets may be used with rimfire rifles and air rifles only.

### **1.2.9 Shooter Safety Responsibilities**

Shooters have the responsibility to comply with the following rules:

- a. No one shall use the range while under the influence of alcohol or drugs.
- b. Firearms must be handled with the utmost care, carried with actions open, bolt removed (where possible) and empty chamber indicator inserted.
- c. When picking up or receiving a firearm, the receiver must verify that it is unloaded and pointed in a safe direction.



- d. The firearm action can only be closed and/or cocked when the firearm is pointed in the direction of the target or for trigger testing under the supervision of a Range Officer.
- e. No firearm is to be removed from the firing mound/point unless it has been inspected and cleared by the Scorer or Range Officer and the empty chamber indicator inserted.
- f. On the command "STOP" or "CEASE FIRE" all firers must stop firing, unload, open, and if possible and when directed remove their firearm bolts, insert the empty chamber indicator and await further commands from the Range Officer.
- g. All personnel will follow the directions of the Range Officers and/or Caretaker.
- h. All firearms on the range must be in good mechanical condition and adjusted to function safely.
- i. Any person who is aware of any misbehaviour, firearm or cartridge condition likely to cause danger or damage, must notify the Range Officer immediately.
- j. No unsupervised spectator is permitted closer than 3 meters from the firing mound/point at any time.
- k. All personnel must secure their firearms when not in use and against theft while they are on the range.
- l. In the event of an accident or malfunction call the range officer immediately. Do not open the firearm or attempt to remedy the problem. Leave the firearm pointing down range.
- m. Other people's firearms or equipment are not to be touched without the owner's permission.

#### **1.2.10 Prescribed Event (Incident or Accident on the Range)**

Any incident or accident caused by a firearm used at the range, specifically causing injury to a person or damage to property at or in vicinity of the range, is considered to be a prescribed event and as such is to be reported in accordance with the requirements of the Queensland Weapons Act and Regulations. The following actions are to occur after injury to a person or damage to property:

- a. Immediate first aid and evacuation (if required) of the injured person is to occur. This may include immediate notification to Queensland Police.
- b. Implement arrangements to preserve the incident site so a thorough and conclusive investigation can be conducted by the appropriate authorities.
- c. Photographs of the scene and/or damaged property are to be taken.
- d. The incident is to be reported to the Club Captain, including all details of the person/people involved and the firearm details.

- e. The Club Captain is to advise the TMRC Committee within 12 hours of the prescribed event and notify the Queensland Police.

### **1.2.11 Concurrent Range Use**

Concurrent range use is subject to the restrictions detailed in Clause 1.2.12 and is permitted only under the specific conditions detailed in Parts 2, 3 and 4.

### **1.2.12 Range Firing Restrictions**

The following restrictions apply:

- a. The 200m Range (Range 2) is to be closed when firing occurs from behind 500m which includes 600yds (GBA) and from 600m to 900m and 1000 yards on the 900m Range (Range 1). The gate between the 200m Range (Range 2) and the 50m Rimfire Rifle Range (Range 3) is to be closed and a red flag attached to the gates as described in clause 1.2.3.
- b. The 200m Range (Range 2) and the 50m Rimfire Rifle Range (Range 3) are to be closed when firing occurs from 300 and 400m on the 900m Range (Range 1).
- c. When the Rimfire Rifle Range (Range 3) and 200m Range (Range 2) are in use, the 900m Range (Range 1) is only permitted to be used at 500m.
- d. Movement to the 900m Range (Range 1) butts area is not permitted while live firing is occurring at either the 200m Range (Range 2) and the 50m Rimfire Rifle Range (Range 3).

## **1.3 CASUAL RANGE BOOKINGS**

### **1.3.1 Casual TMRC Requests**

Requests by TMRC members to use the HRSC outside of scheduled club days are to be forwarded to the TMRC Committee (via the Secretary) for consideration/approval.

### **1.3.2 Third Party Range Bookings**

All Third Party requests for use of the range must be directed the TMRC Committee for approval. *The TMRC Committee is the sole approving authority for Third Party range users.* In submitting an application for use, the Third Party will need to:

- a. Provide legal indemnity or proof of insurance.
- b. Identify an appropriately qualified Range Officer to conduct the practice.
- c. Identify the dates and times of the proposed access/use.
- d. Detail any administrative support required, including use of club facilities, targets, Range Officer etc.

- e. Acknowledge that the Third Party has been issued with a copy of these Range Standing Orders and is willing to sign the Range Register. A 200m Range (Range 2) Safety Brief may be provided in lieu to Registered Training Authorities.

All Third Party Range users will be required to pay a daily access fee to the TMRC. Additional fees may be charged for any administrative support provided. The fee pricing schedule is available from TMRC.

### **1.3.3 Camping**

The area on the northern side of the Halifax clubhouse and west of the fence defining the danger area while firing occurs at 900m and 1000yds is the designated camping area. The camping area, new TMRC clubhouse, the old TMRC clubhouse, caretaker's residence and the ablution buildings are the only facilities that may be occupied while firing occurs at 900m and 1000yds.

A fee for camping at the HRSC is payable to the TMRC. The fees are determined on an annual basis.

## **1.4 HEALTH AND SAFETY REQUIREMENTS**

### **1.4.1 Protection of Hearing/Eyesight**

All shooters and people in the vicinity of the firing point are to wear hearing protection. Shooters are encouraged to wear glasses whilst shooting.

### **1.4.2 Footwear**

All shooters are to wear enclosed footwear.

### **1.4.3 First Aid Kits**

A first aid kit is to be located in the range clubhouse. All range users are to provide their own first aid kit at the firing point when live firing is being conducted. A defibrillator is located in the clubhouse.

### **1.4.4 Evacuation**

In the case of an accident or injury that requires evacuation for medical treatment, a person nominated by the Range Officer is to **call '000'** using a mobile phone.

The Range Officer is to supervise immediate first aid at the scene of the incident and is to ensure the preservation of the incident site so a thorough and conclusive investigation can be conducted by the appropriate authorities (refer 1.2.10).

The closest hospital for all injuries is the Townsville Hospital located at 100 Angus Smith Drive, Douglas, QLD 4814.

### **1.4.5 Alcohol and Drugs**

Personnel are not authorised to shoot on the HRSC if under the influence of alcohol or drugs. The Range Officers have the authority to refuse an individual access to the firing point if they believe that they are under the influence of drugs or alcohol. The onus of proving innocence rests with the individual and not the Range Officer.

Alcohol may only be consumed by personnel on the range complex once they have finished shooting. Under no circumstances may people consume alcohol on the range whilst firing or before firing. Alcohol is only to be consumed in the clubhouse and HRSC camping area.

### **1.4.6 Smoking**

Smoking is not permitted in the clubhouse, in covered firing areas, at the firing point/mound or within 10 metres of the firing point/mound. Cigarette butts are to be disposed of in rubbish bins/smoking trays.

### **1.4.7 Mobile Phones**

Mobile phones are not permitted on the firing point/mound whilst live firing is in progress. Mobile phones are not permitted within 10m of the firing point when electronic targets are being used.

### **1.4.8 General Health and Safety Principles**

The following Principles are to be adhered to by all HRSC users:

- a. All HRSC Users and visitors are asked to comply with TMRC's Sunsmart policy (see [www.tmrc.com.au](http://www.tmrc.com.au)).
- b. All HRSC Users should be conscious of the heat extremes at the complex, consequently all personnel should ensure that they bring and consume water whilst at the HRSC.
- c. All machinery must be checked by operators prior to use to ensure that it is in safe working order.
- d. Any machinery faults will be reported immediately to the responsible Club Official. All machinery must be maintained in safe working order.
- e. Machinery is not to be used in proximity to firing mounds when the range is in use.
- f. Machinery is not to be used in proximity to the clubhouse when personnel are present, to reduce the risk of injury from flying rocks and sticks.
- g. Machinery operators are not to consume alcohol prior to and during the course of machinery operation.
- h. Only machinery operators with the requisite training/qualifications/licenses will operate machinery.
- i. Children are strictly prohibited from riding on mechanical equipment.

- j. Machinery operators will demonstrate a duty of care towards themselves and the public at all times.
- k. All accidents and incidents, including dangers that may present risk to life and limb are to be reported to a Club Official immediately.
- l. All children are to be closely supervised when in the vicinity of any firing point and particularly when shooting is in progress.
- m. COVID 19 “Coronavirus’ pandemic generic requirements:
  - A range COVID 19 Tracing Register is to be filled in by every person attending the HRSC during the pandemic. The clubs and third party users are to ensure these registers are retained for 56 days and available for immediate inspection.
  - Where water is not readily available, a water container with liquid soap is to be positioned behind the firing point in use or near the activity area. All club members, visitors and third party users are to adhere to the hand washing and general hygiene requirements both at the firing point and at the clubhouse.
  - If a club member or visitor presents with flu like symptoms or is ill they are to stay at home. A person who becomes unwell while at the range is to go home immediately, if they feel safe to drive.
  - TMRC Committee will issue more detailed and separate COVID 19 instructions when required to ensure compliance with relevant Queensland Health Directions.

#### **1.4.9 Use of Vehicles**

Private vehicles are permitted for use in the HRSC, providing that:

- a. Personnel only use the mandated roads/tracks in the complex area.
- b. Personnel adhere to the 20kmh speed limit. Speeding will not be tolerated due to the damage it causes to the roads.
- c. Dangerous or ‘hoon’ type activities are not permitted and will not be tolerated.

Personnel who fail to adhere to the HRSC vehicle rules can be banned from using a vehicle in the HRSC complex. This rule can be enforced by any TMRC Committee Member.

### **1.5 ENVIRONMENTAL PROTECTION AND RANGE PROTECTION**

#### **1.5.1 Environmental Protection**

The HRSC is a supporter of nature conservation and the protection of the environment. Consequently the following rules are to be observed:

- a. Dumping is not permitted on the HRSC unless approved by the TMRC Committee. Any person(s) found dumping will be required to remove the dumped items and will be banned from the HRSC.
- b. No native fauna is to be shot at on the HRSC. Where possible, any development activity is to take into account the protection of native fauna habitat and breeding grounds.
- c. Only native flora is to be planted on the HRSC.
- d. The large industrial size rubbish bin (4.5 cubic metre) located near the front gate is provided for the collection of rubbish on the HRSC. All personnel are to ensure rubbish collected during an activity is placed in the large industrial bin at the front gate.
- e. To contain lead contamination, all shots are to be fired in the direction of the stop butt(s).

### **1.5.2 Cyclone Preparedness**

There is an ongoing requirement to ensure that all rubbish and portable items are removed or secured during the cyclone season. Consequently, TMRC will have a program in place for the removal of cyclone hazard items or the correct storage of such items.

## **PART 2 – TMRC 900M RANGE (RANGE 1) SPECIFIC REQUIREMENTS**

### **2.1 DESCRIPTION OF RANGE**

#### **2.1.1 General**

These Standing Orders specifically relate to the use of the 900m Range (Range 1) and should be read in conjunction with current National Rifle Association of Australia (NRAA) Standard Shooting Rules (SSRs).

The TMRC 900m Range (Range 1) is a reduced range danger area (RDA) classification range.

A range layout map which displays the Range Danger Area Templates is at Enclosure 3. The long range template is outlined in RED.

#### **2.1.2 TMRC 900m Rifle Range (Range 1)**

The main range is approved for the use of all 14 targets (A1 to A7 and B1 to B7) with metric firing mounds from 300 to 900 metres. This range is used predominantly for long range target rifle shooting. Firing mounds from 300 to 900 metres are of cement construction. Mobile shades are also used in the summer months and at the discretion of the TMRC Committee.

#### **2.1.3 1000 Yard Bench Rest**

Four benches are set up at 1000 yards for firing at targets No A3, A4, A5 and A6. These benches are located to the rear of the 900 metre mound. The mobile shades must be located off to the side of the actual rifle range before firing commences from the 1000 yard benches.

#### **2.1.4 Permitted Matches**

Only matches listed on Range Approval No 81001649-01 (valid to 12<sup>th</sup> February 2025) are permitted on this range. (Refer Attachment 1). The Range Approval is located on the noticeboard in the range clubhouse.

### **2.2 CONTROL OF TMRC 900M RANGE (Range 1)**

#### **2.2.1 Range Officer**

All live firing is to be controlled by a duly appointed and certified Range Officer. Live firing is not to commence until the Range Officer so authorises. The Range Officer is to ensure that shooting is conducted in a safe manner and within the rules listed in these Range Standing Orders and current NRAA SSRs.

### **2.2.2 Responsible Person**

The responsibility for supervision of safety remains with the Range Officer (NRAA qualified or committee appointment), or the specifically nominated person (normally a qualified instructor, officer or senior non-commissioned officer [Australian Defence Force]) of a visiting group which has sole use of the range.

### **2.2.3 Procedure Before Firing Commences**

In addition to the requirements detailed in Part 1 Clauses 1.2.4 and 1.2.12, the Range Officer is to confirm the 200m Range (Range 2) is not occupied and the observable danger area is clear of personnel and livestock before live firing is authorised. The gate between the 200m Range (Range 2) and 50m Rimfire Range (Range 3) is to be closed and have a red flag attached to it as described in Clause 1.2.3 when firing occurs from 600m to 900m and 1000 yard benches.

### **2.2.4 Concurrent Range Use**

Concurrent range use of the 500m firing point and 200m Range (Range 2) and the Rimfire Rifle Range (Range 3) is permitted with the appointment of a Chief Range Officer who is to oversee activities on all ranges. Concurrent range use may only occur by day.

No firing is to commence until radio communications have been established with each range that will be in use.

### **2.2.5 Flags**

Before the range is opened for day live firing, red range danger flags are to be positioned as described in Part 1 Clauses 1.2.3. and 1.2.12.a. A red flag is to be positioned at the centre rear of the firing point when firearms are not permitted on the firing point.

### **2.2.6 Range Communications**

When target marking is being conducted manually, radio communication is to be maintained between the firing point and the marker's gallery (at the stop butt) at all times when firing is in progress on the TMRC 900m Range (Range 1).

When only electronic targets are being used, there is no requirement for the use of electronic communications unless a person is located in the marker's gallery for minor maintenance purposes.

When concurrent range (TMRC 500m mound [Range 1] and 200m Range [Range 2] and the Rimfire Rifle Range [Range 3]) use occurs, the nominated TMRC Range Officers and TMRC Butts Officer (if there is one) are to maintain communications using radios.

If necessary an emergency communications link can be established using mobile telephones.

### **2.2.7 Safety Rules for Marker's Gallery**

The following safety requirements must be followed when the marker's gallery is occupied while the range is open for live firing:



- a. Markers are to remain under cover when firing is in progress.
- b. If communication is lost between the firing point and the marker's gallery either the red flag is raised by the Butts Officer in the gallery and targets lowered to order a cease fire or the Range Officer orders 'cease fire', 'unload', 'remove bolts' and 'insert empty chamber indicators' at the firing point until corrective action is taken. Firing will only resume when the Range Officer is satisfied communication has been restored and it is once again safe to recommence firing.
- c. The red flag in the target gallery is to be raised only on the order of the Range Officer on completion of firing or by the Butts Officer in case of an emergency. If the flag is raised while firing is in progress, firing is to be stopped immediately.
- d. No person is to leave the marker's gallery without the permission of the Butts Officer and only after the butts flag has been raised and all firing has ceased on all ranges in use.
- e. When the red flag is raised in the marker's gallery, all targets must be lowered.

#### **2.2.8 Safety Rules for Concurrent Use of Electronic and Conventional Targets**

Electronic targets and conventional paper targets with markers can be used concurrently. If concurrent use of both target types occurs, then safety measures for the protection of markers apply. The exception is that electronic targets will not be lowered by the markers when shooting has ceased.

#### **2.2.9 Safety Rules for Use of Electronic Targets when the Marker's Gallery is NOT Occupied while firing occurs**

When the range is open for firing, the Range Officer is to ensure that:

- a. Before authorisation is given for anyone to move into the danger area forward of the firing point to attend to targets, flags or other issues, no rifles remain on the firing point, or that rifles that are on the firing point have their bolts removed and have been checked to ensure the chamber is empty and empty chamber indicators have been inserted. If rifles, with bolts removed, remain on the firing point all competitors and scorers are to move back from the firing point until the Range Officer allows firing to recommence.
- b. All personnel have returned from the danger area and are rear of the firing point prior to giving the order to commence or recommence firing. If any doubt exists, the Range Officer must arrange for a physical check to be conducted to confirm the forward area, particularly the marker's gallery, is clear of personnel.

A red flag is not required at the marker's gallery when shooting is conducted under these arrangements.

### **2.2.10 Electronic Target Use**

Electronic targets contain very expensive sensors/microphones located in the four corners of the target. Consequently, personnel who have an un-zeroed rifle or who doubt the zero of their rifle, must zero their rifle prior to shooting on the electronic target.

The following amplification to these rules apply when using electronic targets:

- a. Personnel must only fire at electronic targets with zeroed rifles. Personnel with un-zeroed rifles will not be permitted to fire.
- b. If the shooter's first shot on an electronic target is a miss, the shooter will be required to relocate to the practice target and zero the rifle before returning to the electronic target to continue their shoot.
- c. Care must be taken when moving the monitors at the firing point. A monitor must not be passed over a shooter or rifle on the mound before ensuring that the rifle is unloaded and the bolt is open.
- d. Rifles in .338 calibre can not be used on electronic targets.

### **2.2.11 Clearance of Firearms**

Before retiring from a firing point each firer must go through the unloading motions with the muzzle pointing towards the target and then remove the bolt from the rifle. Before the firer retires from the firing point they shall present the breech of the rifle to the scorer and check scorer (when one is present) so that they can verify that the chamber of the rifle is empty by looking through the chamber and down the barrel. An empty chamber indicator is to be inserted after the rifle has been confirmed clear by whoever does the checking at the firing point and before the firer leaves the firing point.

### **2.2.12 Cycling of Action**

As described in the SSRs, prior to commencing shooting for the first time each day, the bolt must be cycled in the presence of the scorer.

### **2.2.13 Use of Benches**

Benches are permitted on the firing point and are generally used by shooters with a disability. Once a shooter requiring the use of a bench has completed their shoot, the bench is to be removed to allow other shooters to participate unimpeded.

### **2.2.14 Shooting equipment not in use**

All equipment not being used by a shooter on the firing point is to be located at least 10 metres behind the firing point.

### **2.2.15 Unlicensed Shooters**

Refer to Clause 1.1.8.

### **2.2.16 Stuck Live Round**

If a malfunction results in a stuck live round which cannot be simply removed from the chamber, the Range Officer must be notified immediately. The rifle is to be made safe and removed from the range to a person qualified to conduct the remedial action needed. Under no circumstances is an attempt to be made to remove the round by insertion of a cleaning rod or similar item from the muzzle.

## **2.3 DETAILED INSTRUCTIONS FOR SPECIFIC FIRING POINTS**

### **2.3.1 TMRC 900m Range (Range 1) 300m to 900m**

The following instructions are to be adhered to when using the 900m Range (Range 1):

- a. When firing from the mounds (300m to 900m) the targets engaged by each shooter must be placed in the appropriately numbered target frame to ensure the line of fire is parallel to the centre line of the range.
- b. Target B7 is not be used without TMRC Committee approval.
- c. The 200m Range (Range 2) is to be closed when firing occurs from behind 500m which includes 600yds (GBA) and from 600m to 900m and 1000 yards on the 900m Range (Range 1). The gate between the 200m Range (Range 2) and the 50m Rimfire Rifle Range (Range 3) is to be closed and a red flag attached to the gates as described in clause 1.2.3.
- d. The 200m Range (Range 2) and the Rimfire Rifle Range (Range 3) are to be closed when Fullbore firing occurs from 100 to 400m.
- e. A red flag is to be placed on the gate between the 200m Range and 50m Rimfire Rifle Range when firing occurs from 600m to 900m as per Clause 1.2.3.
- f. When Firing from 900m and 1000yds:
  - The range access road is to be closed to all traffic using the road closure barrier where it first meets the 900m Range (Range 1) near the 900m firing mound.
  - Access points to the 900m Range (Range 1) from the old TMRC clubhouse, ablution block and camping areas are to be closed to vehicle and pedestrian traffic by closing the access gates. This access must also be closed when firing occurs from the 800m firing mound.
- g. When Firing from 1000 Yard Bench Rest, the targets are to be positioned in target frames A3, A4, A5 and A6 only.

### **2.3.2 Protection of Hearing**

All firers and people in the vicinity of the firing point are to wear hearing protection.

## **2.4 MEDICAL / EVACUATION**

### **2.4.1 First Aid Kit.**

The TMRC first aid kits are located in the clubhouse and the range trailer or vehicle.

### **2.4.2 Evacuation.**

Refer to Clause 1.4.4.

## **2.5 RANGE RESTRICTIONS**

### **2.5.1 Type of Firearms Approved for Use on the Range**

The firearms and ammunition that are approved for use on the TMRC 900m Range (Range 1), as per Attachment 1, are:

- a. rifles up to 8 mm calibre.*
- b. blackpowder rifles up to .58 calibre.*
- c. Muzzle velocity of ammunition is not to exceed 3275 feet per second (998 m/s).*
- d. Muzzle energy of ammunition is not to exceed 5160 foot pounds (6992 joules).*
- e. Rifles in 338 Lapua calibre may be used if the ammunition meets the muzzle velocity and muzzle energy restrictions.*

### **2.5.2 Specific Range Restrictions**

In addition to standard safety procedures, the following restrictions apply to the range complex:

- a. Automatic fire is not permitted.*
- b. Pyrotechnics and tracer ammunition are not to be used.*
- c. Use of steel plate targets is not permitted (except when using rimfire and air rifles).*

## **PART 3 – RIMFIRE RIFLE RANGE (RANGE 3) SPECIFIC REQUIREMENTS**

### **3.1 DESCRIPTION OF RANGE**

#### **3.1.1 General**

All range users and Range Officers are to be aware of the requirements contained in these RSO.

#### **3.1.2 50m Rimfire Rifle Range (Range 3)**

This range is located on the far western side of the complex.

Only the rimfire rifle matches listed on Range Approval No 81001649-01 (valid to 12<sup>th</sup> February 2025) are permitted on this range. Specific muzzle velocity and muzzle energy limits are listed in Attachment 1.

A range layout map which displays the Range Danger Area Templates is at Enclosure 3. The Rimfire Rifle Range (Range 3) template is outlined in BLUE.

### **3.2 CONTROL OF RIMFIRE RIFLE RANGE (RANGE 3)**

#### **3.2.1 Range Officer**

Range Officers are responsible for the safe conduct of shooting on the range that they are supervising. The Range Officer may appoint an Assistant Range Officer to help with the safe conduct of the range. Range Officers and Assistant Range Officers must hold a current Weapons Act Licence for the rimfire rifles that are being used and be qualified NRAA or QTS Range Officer. The Range Officer's name must be clearly displayed on the noticeboard at the range when the range is open for shooting. The Range Officer must take all reasonable steps to ensure that a person attending the range does not contravene the Weapons Act.

#### **3.2.2 Range Clearance**

The range is to be cleared of livestock or any item that may be dangerous or be damaged prior to firing. If uncertain that the TMRC 900m Range (Range 1) butts area is clear, a physical inspection is to be conducted by the Range Officer or a person appointed by them.

#### **3.2.3 Red Flag**

A red flag must be flown at the front gate and on flagpole on the range when the range is open for shooting.

### **3.2.4 Road Closure**

When this range and or the 200m Range (Range 2) is in use, the roadway at the left of the firing line (eastern side of the 200 m Range firing point) is to be closed by placing traffic control devices on or across the roadway to clearly indicate vehicles cannot proceed beyond this point. This is to prevent people driving into the danger area while either range is in use.

### **3.2.5 Firing Line**

All firing is to be down range parallel to the centre line of the range, and in a manner that projectiles are captured by the stop butt.

### **3.2.6 Targets**

Paper targets may be used on this range. The only metal targets permitted are 10mm plate rimfire silhouette targets. Glass, other metal and nonstandard targets are not permitted on this range.

### **3.2.7 Range Register**

All persons using the range must sign the range register located with the Range Officer.

### **3.2.8 Unlicensed Shooters**

Refer to Clause 1.1.8.

### **3.2.9 Range Permits**

The relevant Range Permit is to be displayed on the range.

### **3.2.10 Spent Cartridges**

All spent cartridge cases and rubbish must be collected and placed in containers provided or removed from the range at the completion of competition or practice.

### **3.2.11 Range Standing Orders**

Parts 1 and 3 of the HRSC Range Standing Orders are to be displayed on this range and are to be complied with at all times.

### **3.2.12 Loading of firearms**

Rimfire rifles must not be loaded except on the firing line under the control of the Range Officer.

### **3.2.13 Inspection of firearms**

Rimfire rifles and magazines are to be inspected by the Range Officer and declared "clear" and empty chamber indicators inserted before they can be removed from the firing line. Removable magazines must have any unused ammunition removed and be inspected by the Range Officer before they can be removed from the firing line.

### **3.2.14 Inspected Rifles**

After inspection, rimfire rifles with empty chamber indicators inserted must be stored in the rifle racks or on tables provided, with the actions open or bolt removed (where possible). When the range is closed for shooting, and firers are forward of the firing line, the rimfire rifles are not to be touched or cleaned unless under the supervision of the Range Officer.

### **3.2.15 Handguns**

Handguns (pistols) are not to be fired on this range.

### **3.2.16 Ammunition Restrictions**

Muzzle velocity of rimfire ammunition is not to exceed 1710 ft/s (521 m/s). Muzzle energy of rimfire ammunition not to exceed 210 foot pounds (285 joules).

### **3.2.17 Stuck live round**

If a malfunction results in a stuck live round which cannot be simply removed from the breech end of the barrel, the Range Officer must be notified immediately. The rimfire rifle is to be made safe and removed from the range to a person qualified to conduct the remedial action needed. Under no circumstances is an attempt to be made to remove the round by insertion of a cleaning rod or similar item from the muzzle or front of the cylinder.

### **3.2.19 Supervision of Rimfire Rifles**

Firearms are not to be left unsupervised while on the range. At least one suitably licensed person is to remain with firearms at all times.

## **3.3 HEALTH AND SAFETY REQUIREMENTS**

Refer to Clause 1.4.

## **3.4 RANGE COMMUNICATIONS**

### **3.4.1 Radio Communications**

Communications must be established before firing commences by use of hand held radios when more than one range is to be used on the complex.

### **3.4.2 Loss of Communications**

If communications are lost on any range, for any reason, shooting is to cease immediately and no one is to move forward o. (Refer Attachment 1)f the firing line until communications are again established.

### **3.4.3 Carriage of Radios**

When in use radios are to be kept within hearing distance at all times. Consideration should be given to the fact that hearing protection is being worn.

## **Part 4 – 200M RANGE (RANGE 2) SPECIFIC REQUIREMENTS**

### **4.1 DESCRIPTION OF RANGE**

#### **4.1.1 General**

All range users and Range Officers are to be aware of the requirements contained in these RSO.

#### **4.1.2 200m Range (Range 2)**

This range is located on the western side of the TMRC 900m Range (Range 1) and is approved for use up to 200 metres.

Only the matches listed on Range Approval No 81001649-01 (Valid to 12<sup>th</sup> February 2025) are permitted on this range and include rimfire and centrefire rifles. Specific muzzle velocity and muzzle energy limits are listed in Attachment 1.

A range layout map which displays the Range Danger Area Templates is at Enclosure 3. The 200m Range template is outlined in GREEN.

#### **4.1.3 Rimfire Shooting**

The entire range can be used for rimfire shooting using paper and metallic silhouette targets. The metallic silhouette targets are only to be positioned on the western half of the range.

#### **4.1.4 Centrefire Shooting**

Static prone and bench rest zeroing of centrefire rifles can only be conducted from firing points at paper or electronic 'Shotmarker' targets (only) within clearly defined firing lanes on the eastern 20 metres of this range. All centrefire shooting is to occur to the east (left) of the red painted line on the concrete firing point.

### **4.2 CONTROL OF 200M RANGE (RANGE 2)**

#### **4.2.1 Range Officer**

Range Officers are responsible for the safe conduct of shooting on the range that they are supervising. The Range Officer may appoint an Assistant Range Officer to help with the safe conduct of the range. Range Officers and Assistant Range Officers must hold a current Weapons Act Licence for the category of firearms that are being used and be qualified NRAA or QTS Range Officer. The Range Officer's name must be clearly displayed on the noticeboard at the range. The Range Officer must take all reasonable steps to ensure that a



person attending the range does not contravene the Weapons Act. Third Party operators must comply with Clause 1.3.2.

#### **4.2.2 Range Clearance**

The range is to be cleared of livestock or any item that may be dangerous or be damaged prior to firing. If uncertain that the TMRC 900m Range (Range 1) butts area is clear, a physical inspection is to be conducted by the Range Officer or a person appointed by them.

#### **4.2.3 Red Flag**

A red flag must be flown at the front gate and on the flagpole located on the eastern end of the firing point when the range is open for shooting.

#### **4.2.4 Road Closure**

When the 200m Range is in use, the roadway at the left of the firing line is to be closed by placing traffic control devices on or across the roadway to clearly indicate vehicles cannot proceed beyond this point. This is to prevent people driving past the firing line while it is in use.

#### **4.2.5 Firing Line**

All shooting is to be down range parallel to the centre line of the range, and in a manner that projectiles are captured by the stop butts.

#### **4.2.6 Targets**

Paper targets and metallic silhouette targets may be used on this range. Glass, metal and nonstandard targets are not permitted on this range.

#### **4.2.7 Metallic Silhouette Targets**

Metallic silhouette targets are only permitted on the western side of the range and can only be fired upon using rimfire and air rifles. Under no circumstances are centrefire rifles to be used against metallic silhouette targets.

#### **4.2.8 Range Register**

All persons using the range must sign the range register located with the Range Officer.

#### **4.2.9 Unlicensed Shooters**

Refer to Clause 1.1.8.

#### **4.2.10 Range Permits**

The relevant Range Permit is to be displayed on the range.

#### **4.2.11 Spent Cartridges**

All spent cartridge cases and rubbish must be collected and placed in containers provided or removed from the range at the completion of competition or practice.

#### **4.2.12 Range Standing Orders**

Parts 1 and 4 of the HRSC Range Standing Orders are to be displayed on this range and are to be complied with at all times.

#### **4.2.13 Loading of firearms**

Firearms must not be loaded except on the firing line under the control of the Range Officer.

#### **4.2.14 Inspection of firearms**

Firearms and magazines are to be inspected by the Range Officer and declared "clear" and empty chamber indicators inserted before they can be removed from the firing line. Removable magazines must have any unused ammunition removed and be inspected by the Range Officer before they can be removed from the firing line.

#### **4.2.15 Inspected Rifles**

After inspection, rifles with empty chamber indicators inserted must be stored in the rifle racks or on tables provided, with the actions open or bolt removed (where possible). When the range is closed for shooting, and firers are forward of the firing line, the firearms are not to be touched or cleaned unless under the supervision of the Range Officer.

#### **4.2.16 Handguns**

Handguns (pistols) can only be fired on this range when under the supervision of an Authorised Training Authority (such as Asset Training Australia).

#### **4.2.17 Ammunition Restrictions**

Muzzle velocity of rimfire ammunition is not to exceed 2400 ft/s (610 m/s). Muzzle energy of rimfire ammunition not to exceed 350 foot pounds (434 joules). Muzzle velocity of centrefire ammunition is not to exceed 4100 ft/s (1250 m/s). Muzzle energy of centrefire ammunition not to exceed 4182 foot pounds (5675 joules).

#### **4.2.18 Stuck live round**

If a malfunction results in a stuck live round which cannot be simply removed from the breech end of the barrel, the Range Officer must be notified immediately. The firearm is to be made safe and removed from the range to a person qualified to conduct the remedial action needed. Under no circumstances is an attempt to be made to remove the round by insertion of a cleaning rod or similar item from the muzzle or front of the cylinder.

#### **4.2.19 Supervision of Firearms**

Firearms are not to be left unsupervised while on the range. At least one suitably licensed person is to remain with firearms at all times.

### **4.3 HEALTH AND SAFETY**

Refer to Clause 1.4.

### **4.4 RANGE COMMUNICATIONS**

#### **4.4.1 Radio Communications**

Communications must be established, by use of hand held radios when more than one range is to be used on the complex, before firing commences.

#### **4.4.2 Loss of Communications**

If communications are lost on any range, for any reason, shooting is to cease immediately and no one is to move forward of the firing line until communications are again established.

#### **4.4.3 Carriage of Radios**

When in use radios are to be kept within hearing distance at all times. Consideration should be given to the fact that hearing protection is being worn.

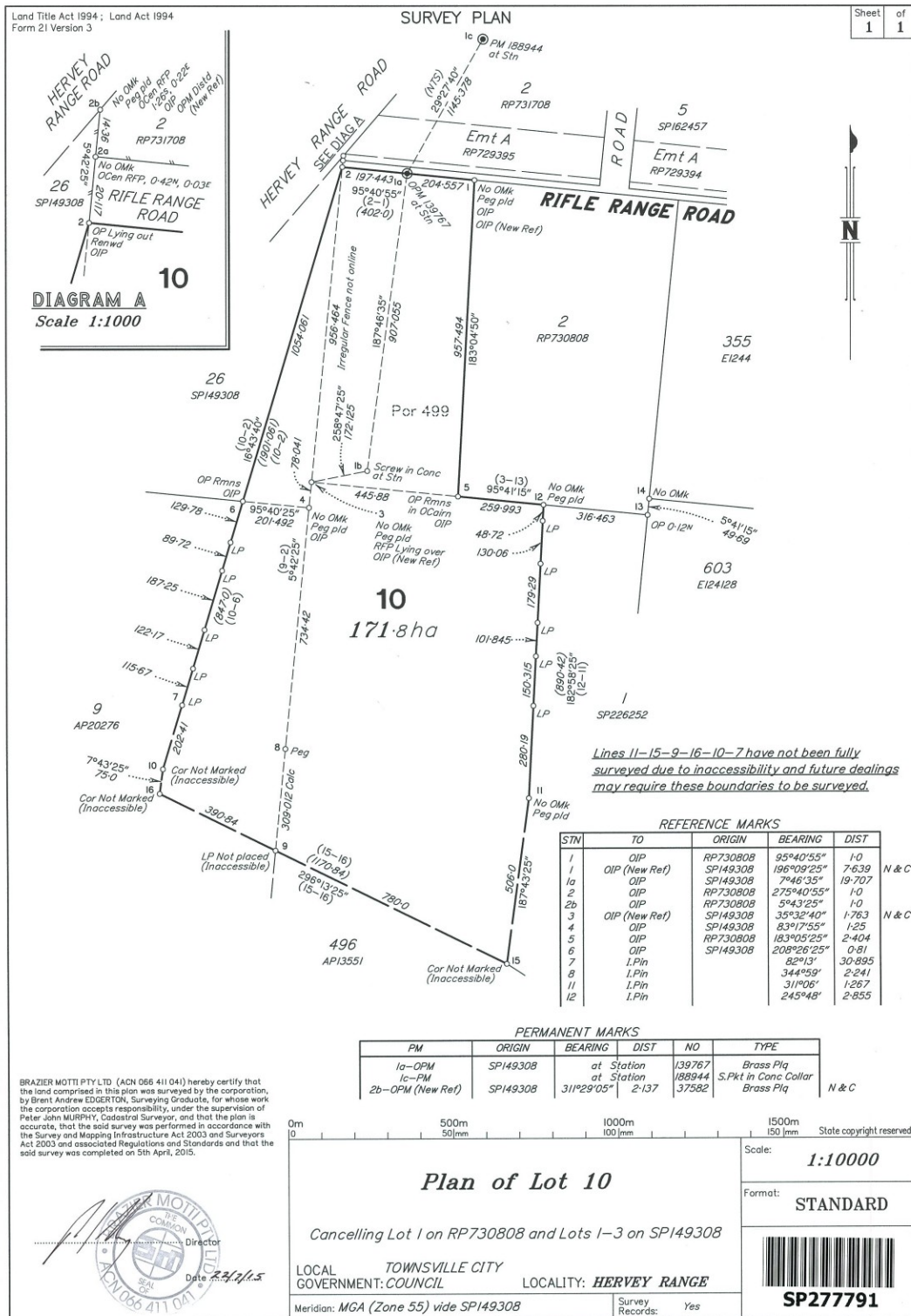
## **ENCLOSURES**

1. Property Identification Map / Survey Plan
2. Aerial View / Map of HRSC Identifying Ranges
3. QPS Approved Range Safety Templates

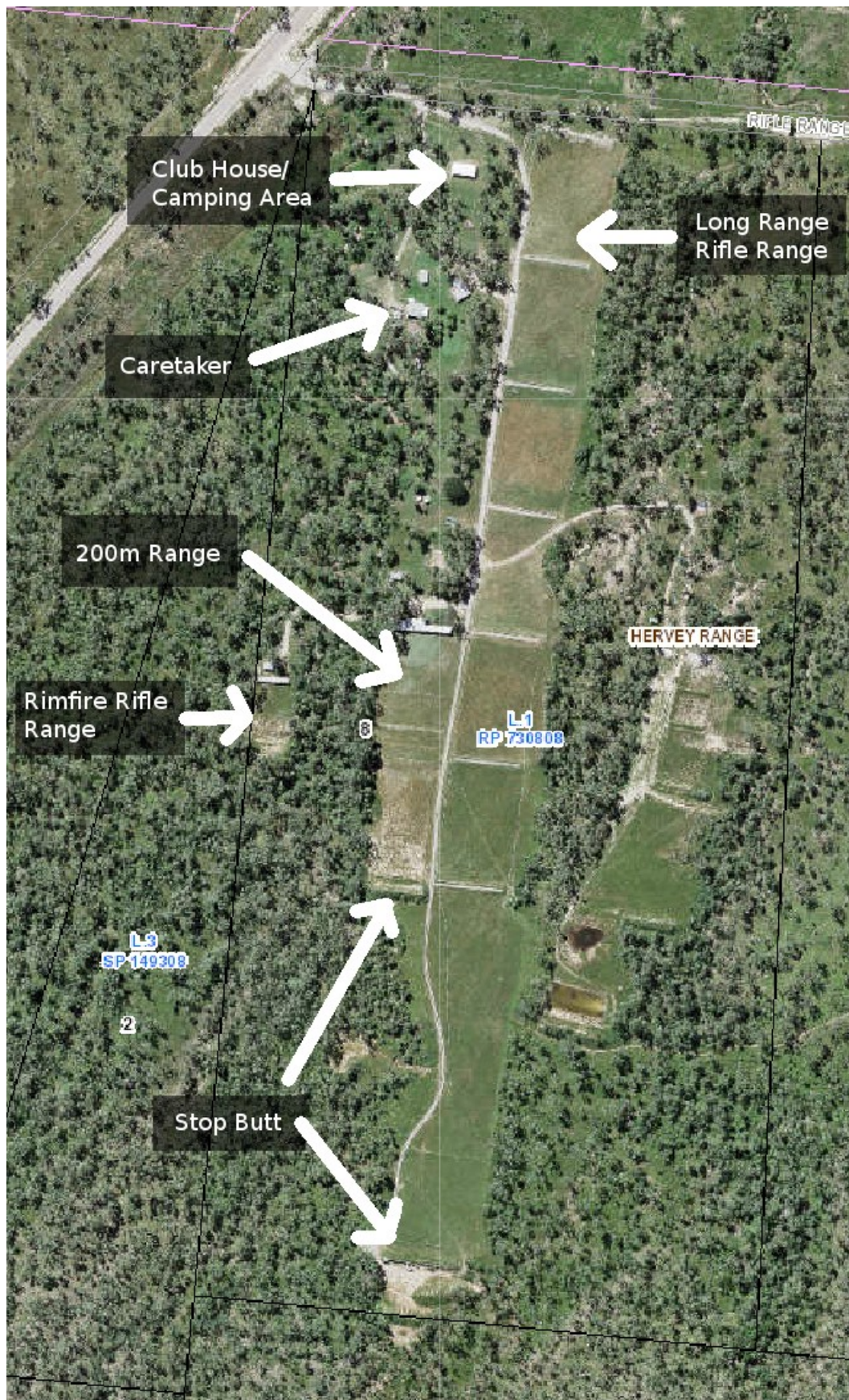
## **ATTACHMENTS**

1. TMRC Range Approval Permit No 81001649-01 (covers all three ranges)

## Enclosure 1 - Property Identification Map





**Enclosure 2 – Aerial View / Map of HRSC Identifying Ranges**




## Enclosure 3 – Queensland Police Service Approved Range Safety Templates



## Attachment 1

1 of 3

**QUEENSLAND POLICE SERVICE**

**WEAPONS ACT 1990**  
**APPROVAL OF A RANGE**

**APPROVAL No. 81001649-01**

I, Matthew GROOM, an Authorised Officer under  
the provisions of the Weapons Act 1990, hereby grant approval of the

**TOWNSVILLE MARKSMEN RIFLE CLUB  
INC**

to use the place at:

**8 RIFLE RANGE ROAD  
HERVEY RANGE QLD 4817**

as the range of the club.

**CONDITIONS**

RR5 – This approval is granted on the condition that the range will be used for sport or target shooting and/or conducting training courses approved by the Commissioner for Sections 10A(2) or 124 of the Weapons Act 1990, and/or any person/s exempted under Section 2 of the Weapons Act 1990.

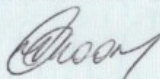
No category of weapon is to be used on the range that has not been approved for use on the range by the Authorised Officer, Weapons Licensing Branch.

No course of fire or type of shooting is to be conducted on the range that has not been approved for use by the Authorised Officer, Weapons Licensing Branch.

At least one Range Officer, appointed by the Range Operator, is to be present on the range at all times when a weapon is discharged. The Range Operator must provide the Authorised Officer, within 14 days of the holder first becoming aware, or suspecting, that a "prescribed event" has happened at the range, written notice of the event. The notice may only relate to injury or damage caused by a firearm used at the range, other than damage to a target or thing designed as a bullet barrier.

A "prescribed event" means an injury to a person or damage to property at or in the vicinity of a shooting range. The Range Operator must ensure that warning signs are permanently displayed at the range entrance and all other paths, tracks or entry points into the range and any range danger area. The Range Operator must ensure that a copy of the Range Standing Orders are prominently displayed at the range and made freely available to all persons attending the range.

**ISSUED AT BRISBANE THIS 6<sup>th</sup> DAY OF FEBRUARY 2020**



**AUTHORISED OFFICER**



QUEENSLAND POLICE SERVICE 2 of 3

## WEAPONS ACT 1990 APPROVAL OF A RANGE

APPROVAL No. 81001649-01

The Range Operator must ensure that before any person uses the range to discharge a weapon, that red flags by day or red lights or illuminated red flags by night are displayed at the range entrance and to the immediate rear of the main firing line (flags to be no less than 1.2m by 0.9m). The red flags must be lowered or removed and red lights turned off when the range is no longer being used to discharge weapons.

999 – This range approval permits the use of Category A Weapons, Category B Weapons, Category C Weapons, Category D Weapons, Category H Weapons and Category M Weapons for the purposes of Sports & Target Shooting and for Training Purposes only.

This approval relates to the Townsville Marksmen Rifle Club which currently has three approved ranges. The approved Ranges are:

**Range 1** is a 1000yd Full Bore Range, using a Classification Safety Template. This range is approved for possession and use of Category A Weapons and Category B Weapons for training and sports target shooting. Category C and Category D weapons approved for Training purposes only. The range is approved for use with all fourteen targets.

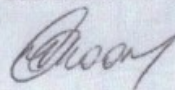
RT4 - Muzzle velocity of ammunition used not to exceed 3275 feet per second (998 metres/second). Muzzle energy of ammunition used not to exceed 5160 foot pounds (6992 joules).

999 - **Range 2** is a 200m Full Field Range, using a 7.62x39mm Safety Template. This approval only permits the use of Category A Weapons and Category B Weapons for sport target shooting. Category C, D, M and H Weapons only permitted for use on the range for firearms training purposes. The 200m rifle range is located to the west of the main full bore rifle range. Only soft targets and soft or defended target frames are permitted for use with centre fire and black powder weapons over pistol calibre (Muzzle velocity 1400 feet per second (426 metres/second) and muzzle energy 500 foot pounds (678 joules). All shooting positions at the main shooting shed are approved for use.

RS1 - Muzzle velocity of ammunition used not to exceed 4100 feet per second (1250 metres/second) for centre fire and black powder weapons. Muzzle energy of ammunition used not to exceed 4182 foot pounds (5675 joules) for centre fire and black powder weapons.

RS9- Muzzle velocity of ammunition used not to exceed 2400 feet per second (610 Metres/second) for rimfire weapons. Muzzle energy of ammunition used not to exceed 350 foot pounds (434 joules) for rim fire weapons.

ISSUED AT BRISBANE THIS 6<sup>th</sup> DAY OF FEBRUARY 2020



AUTHORISED OFFICER



QUEENSLAND POLICE SERVICE 3 of 3

## WEAPONS ACT 1990 APPROVAL OF A RANGE

APPROVAL No. 81001649-01

999 - **Range 3** is a 50m Range, using a .22inch Safety Template. This approval only permits the use of Category A (Rimfire) Weapons for training and sport target shooting. Category C (Rimfire) Weapons only permitted for use on the range for firearms training purposes. This range approval refers to the 50 Metre range located to the west of the 200m full field rifle range.

RS3 - Muzzle velocity of rim fire ammunition used not to exceed 1710 feet per second (521 metres/second). Muzzle energy of rim fire ammunition used not to exceed 210 foot pounds (285 joules).

999 - The current representative for this approval is Robert M HAWKINS.

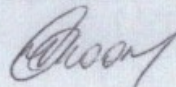
This approval permits general target practice consistent with the approved matches for this range.

THIS APPROVAL SHALL CONTINUE IN FORCE FROM 12<sup>th</sup> FEBRUARY 2020 UNTIL 12<sup>th</sup> FEBRUARY 2025 UNLESS SOONER SURRENDERED, CANCELLED OR REVOKED BY AN AUTHORISED OFFICER.

The following matches may be held at this range:

AIR RIFLE MATCH  
CENTREFIRE RIFLE MATCH  
BENCHREST CENTREFIRE MATCH  
BENCHREST RIMFIRE MATCH  
FULLBORE F CLASS RIFLE MATCH  
FULLBORE RIFLE MATCH (NRAA)  
NRAA RIMFIRE CLASS MATCH  
NRAA SERVICE MATCH  
NRAA FULLBORE MATCH  
NRAA FIELD AND RIMFIRE MATCH  
RIMFIRE SILHOUETTE MATCHES  
RIMFIRE SMALLBORE MATCH  
1000Y and 600Y BENCH REST MATCH  
MUZZLE LOADING RIFLE MATCH  
SSAA MILITARY SERVICE RIFLE MATCH  
SERVICE RIFLE MATCH

ISSUED AT BRISBANE THIS 6<sup>th</sup> DAY OF FEBRUARY 2020



AUTHORISED OFFICER